



Total Solution Provider in Saw Device

SL6220DT

62.5 MHz IF SAW Filter
21.2 MHz Bandwidth
Revision 1: 29. Oct. 2007



- Electrical Characteristics
 - Package Dimensions
 - Testing Environment
 - Frequency Characteristics
-

SAWNICS Inc.

460 Cheonheung-ri, Seonggeo-eup, Cheonan-si, Chungcheongnam-do, 330-836 / Korea.
Tel: +82 41 550 9372 / Fax: +82 41 550 9399 / www.sawnics.com

□ Electrical Characteristics

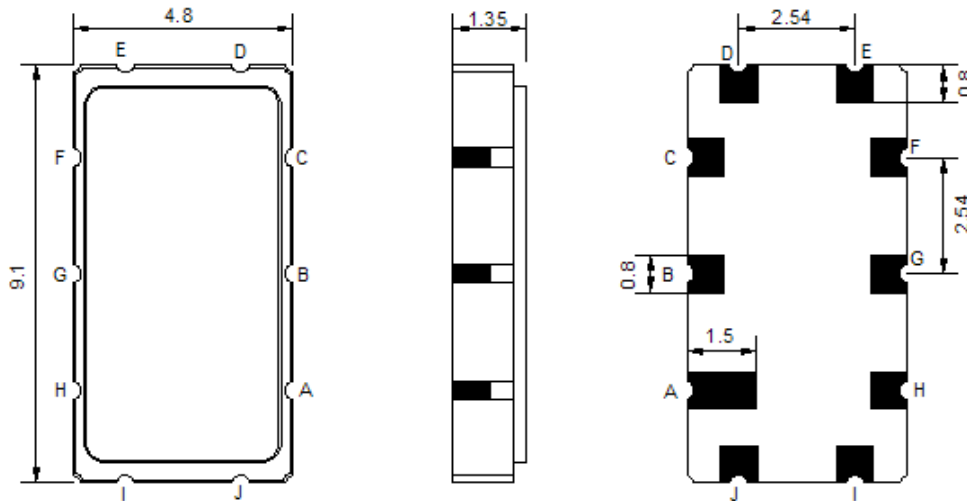
Maximum Ratings

Parameters Description	Unit	Minimum	Typical	Maximum
Operating Temperature Range	°C	-30	-	80
Storage Temperature Range	°C	-40	-	85
Maximum DC Voltage	V	-	-	10
Maximum Input Power	dBm	-	-	10
Source Impedance (single ended) ⁽¹⁾	Ω	-	50	-
Load Impedance (single ended) ⁽¹⁾	Ω	-	50	-
Package type & size	T			
Length x Width	mm ²	-	9.1 x 4.8	-
Height	mm	-	-	1.5

Electrical Specification

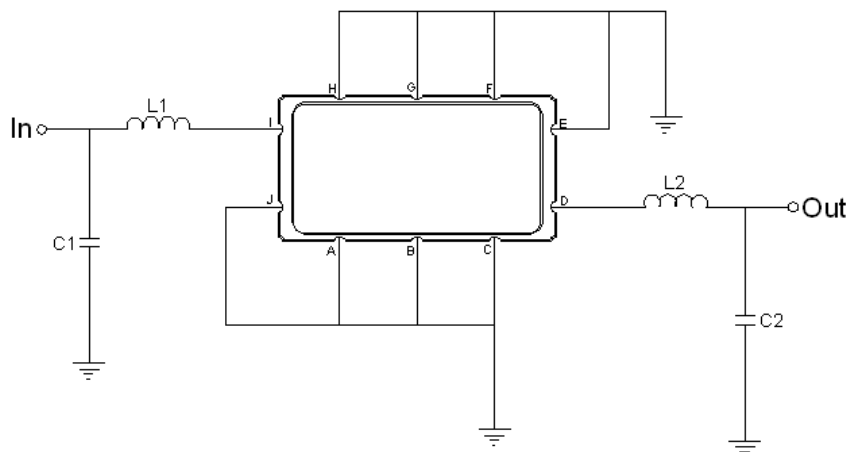
Parameters Description	Unit	Minimum	Typical	Maximum
Center Frequency (Fo)	MHz	-	62.50	-
Insertion Loss at Fo	dB	-	18.0	20.5
Group Delay Variation at Fo±9.75MHz	nsec	-	20	40
Absolute Delay at Fo	usec	-	0.91	-
Passband Ripple at Fo±9.75MHz	dB	-	0.30	1.0
Bandwidth at -1dB	MHz	20.7	21.2	-
Bandwidth at -3dB	MHz	21.8	22.2	-
Bandwidth at -20dB	MHz	-	24.9	-
Bandwidth at -30dB	MHz	-	25.6	26.5
Bandwidth at -40dB	MHz	-	26.9	27.5
Relative Attenuation:				
Lower sidelobe	dB	40	45	
Upper sidelobe	dB	40	45	

Package Dimensions



Pin Description	
A, B, C, E, F, G, H, J	Ground
I	Input
D	Output

Testing Environment



Test Fixture & Values	
Input	L1 = 180 nH , C1 = 22 pF
Output	L2 = 180 nH, C2 = 20 pF
Source/Load Impedance	50 Ω

□ Frequency Characteristics

Frequency Response

